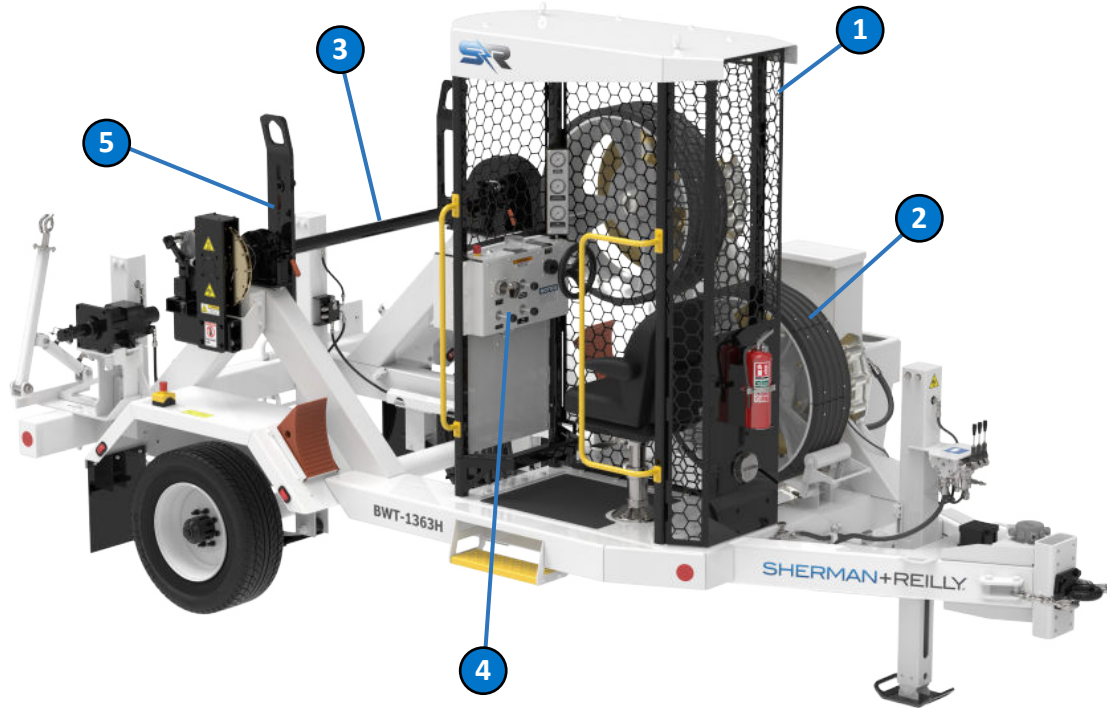




SHERMAN+REILLY®

BWT-1363H Heritage Bullwheel Tensioner

3,000-lb., 36-in. Bullwheel Tensioner



- 1 Safe-Zone® enclosure with Ocu-View™ screen
- 2 Set of 36-inch, five-groove bullwheels with bolt-on cast linings
- 3 Integrated reel carrier
- 4 All stringing operations controlled from the safety of the Safe-Zone® enclosure
- 5 Seamless reel change with S+R pillow block bearing support

Features

- Tensioning capacity of 3,000 lb. built into a compact configuration
- Reel carrier accommodates reels up to 72 in. OD x 44.5 in W and 6,500 lb.
- Two conductor keeper assemblies
- Offset bullwheels and adjustable fairlead support both LH and RH lay conductor
- Available with hydraulic power pack for reel control, Spider® rewind and hydraulic jack control
- Available with Spider® pilot line system (pictured)

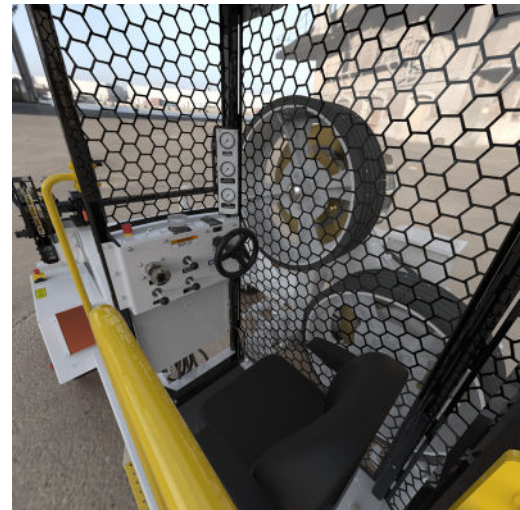
Specifications

| | |
|-----------------------------|--|
| Max. Tensioning Capacity | 3,000 lb. |
| Max. Line Speed | 4 mph |
| Max. Conductor Reel Size | 72 in. OD x 44.5 in. W |
| Max. Conductor Reel Weight* | Dynamic - over the road: 6,500 lb. Static - jacks extended: 6,500 lb. |
| Reel Shaft Diameter | 2.625 in. |
| Reel Supports | Sealed ball bearing, quick-release |
| Payout Brake | 16 in. dia. disc, bronze |
| Bullwheels | Nominal dia.: 36 in. Count: 2 each Groove count: 5 per bullwheel Groove lining: replaceable Groove radius: 0.75 in. Groove flare angle: 15° Groove depth: 0.75 in. Bottom of groove dia.: 33.98 in. |
| Tension Brake | 27.75 in. dia. disc, bronze |
| Brake Control | 3-axis caliper, manual hydraulic, operated from Safe-Zone® enclosure |
| Fairlead Rollers | Supports LH and RH lay |
| Operator's Safety Enclosure | Safe-Zone® open-air enclosure |
| Frame Construction | Steel tubing |
| Length (Overall, Nom.) | 17 ft. |
| Width (Overall, Nom.) | 8 ft. |
| Height (Overall, Nom.) | 9 ft. 6 in. |
| Weight* | 6,500 lb. |
| GVWR | 13,000 lb. |
| Suspension | Leaf-spring |
| Axle Configuration | Single-axle, single-wheel |
| Per Axle GAWR | 12,000 lb. w/ tires 235/75R17.5 @ 125 psi |
| Brakes (Trailer) | Electric w/ break-away safety switch |
| Towing Attachment | 3 in. adjustable pintle eye |
| Safety Chains | Two (2) each w/ hooks |
| Bumper (SS/CS) Jacks | Manual drop & pin (2) |
| Tongue Jack | Manual, 2-speed crank jack |
| Electrical System | Split 12 VDC |
| Backup Battery | 12V |
| Lights/Navigation | US DOT, LED, 12 VDC |
| Grounding | 1 in. grounding stud (1) grade 5H |
| Deck Cover | Non-slip surface |

| | |
|-------------------|--------------|
| Wheel Chocks | Standard (2) |
| Fire Extinguisher | ABC |
| Color | S+R white |

Options

- Full vinyl cover
- Bullwheel-only cover
- Payout brake cover
- Powerpack option including hydraulic jacks, hydraulic retriever and Spider® pilot line system with levelwind
**Hydraulic retriever performance: approx. 20,000 in./lb. at 7 GPM and 2,000 psi. Do not exceed 12 GPM and 3,000 psi*
- Powerpack option including hydraulic jacks and hydraulic retriever
**Hydraulic retriever performance: approx. 20,000 in./lb. at 7 GPM and 2,000 psi. Do not exceed 12 GPM and 3,000 psi*
- Air brakes
- Galvanized finish available
- RDG-2100 rotating distribution ground
- DG-4100 running ground
- 12V solar battery charger



BWT-1363H Cab Interior

*Specifications are subject to change