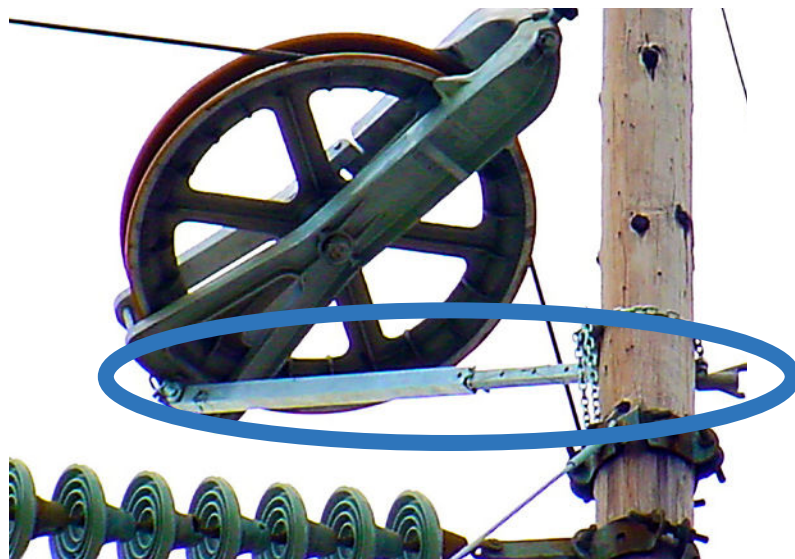


BSD-748 Block Support Device

- Will adjust to fit wood, concrete, steel poles
- Capable of “floating outward” should the load and force during stringing dictate more angle
- Fits sizes 12 in. - 16 in. (74 Series) and sizes 20 in. - 35 in. (78 series) S+R single-conductor stringing blocks

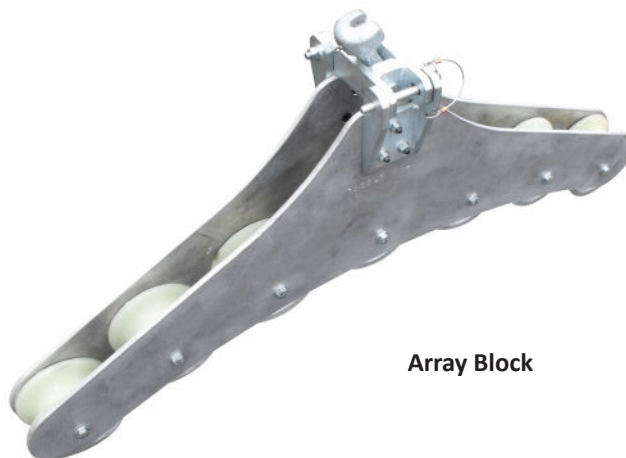


BSD-748

Array Block

Used to create gentle break-over angles in typical applications like the first tension-site tower, last pull-site tower and for towers with running angles greater than 24 degrees

- Available in 7-sheave and 14-sheave designs
- Carries less than 9-degrees per roller
- Supports ACCR conductor



Array Block

Sheaves	Max. Work Load (lb)	Breakover Angle	Radius (in.)	Bottom of Groove Dia. (in.)	Lining	Side Frames
7	7,500	60°	60	4 ½ - 4 ⅞	Urethane or Polished Groove	Aluminum
14		90°				