



SHERMAN & REILLY

400 West 33rd St. • Chattanooga, TN 37410 USA

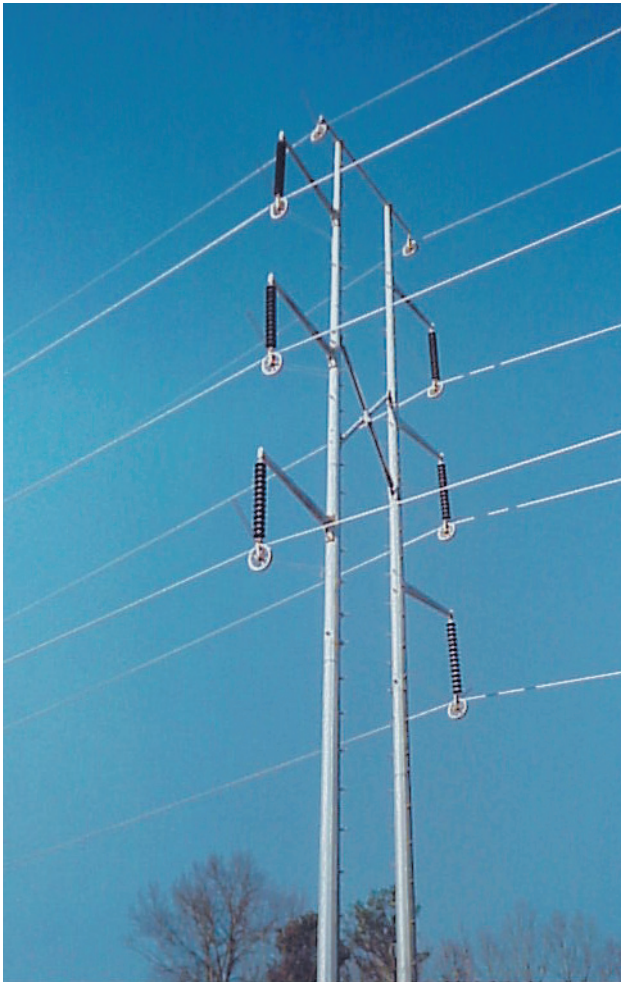
Toll Free 1.800.251.7780 • Phone 423.756.5300 • Fax 423.756.2948

Web Site - <http://www.sherman-reilly.com> • E-Mail - sales@sherman-reilly.com

TRANSMISSION STRINGING BLOCKS

Transmission Stringing Blocks

Transmission construction is a very specialized type of line installation. Not only are structures taller, spans longer, conductors larger, but also pulls are longer and over very arduous terrain. In addition, aluminum conductors vary in the construction requirement requiring special handling techniques, special tools, and equipment. Transmission also brings different line and structure designs, conductor configurations i.e., single, and bundle two, three and four per phase. Some lines are constructed using conventional equipment and tools while others require stringing using helicopters. Sherman & Reilly has a history of working with the conductor manufacturers, the utility construction departments, design engineers, consultants, and line contractors to develop the necessary tools and equipment to keep abreast of the changing needs and problems of installation. For over forty years, we have served IEEE on various committees and task groups and chaired the committee that produced A Guide to The Installation of Overhead Transmission Line Conductors 524 (see section 8).



This section contains the most comprehensive collection of material for transmission line conductors ever assembled in one document. Single conductor blocks, bundle blocks, multiversal blocks, static wire blocks, grounding blocks, single helicopter blocks, and bundle helicopter blocks and accessories are also included. We know you will find just the right products to meet your needs!

