



SHERMAN & REILLY

400 West 33rd St. • Chattanooga, TN 37410 USA

Toll Free 1.800.251.7780 • Phone 423.756.5300 • Fax 423.756.2948

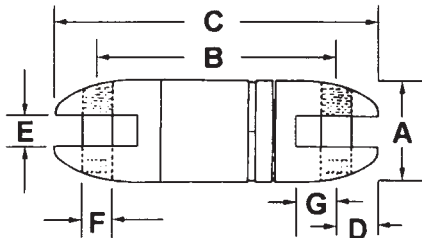
Web Site - <http://www.sherman-reilly.com> • E-Mail - sales@sherman-reilly.com

OVERHEAD LINE STRINGING SWIVELS

Overhead Line Stringing Swivels

General Specifications:

These swivels are specifically designed for overhead line stringing. A reliable heavy duty product with adequate load rating for tension stringing, yet small enough in diameter to pass through conductor stringing blocks. Swivels should never be passed through bullwheels. Be sure to check diameter of swivel against dimension on blocks, etc. Swivels are precision machined, alloy steel, heat treated for maximum strength and wear. Neoprene seals with stainless steel spring retainers keep the high viscosity, wide temperature range grease in; keep out water, dirt and foreign matter. Swivels should be compatible with strengths of pulling line and grips. These swivels are not recommended for underground use in conduit. Refer to Sherman & Reilly underground connectors.



Model No.	Wire Rope Size	Max Working Load, lbs	A	B	C	D	E	F	G	Swivel Weight lbs.
A-18	1/4	1,800	7/8	2-15/32	3-3/8	15/32	5/16	5/16	19/32	3/8
B-45	3/8	4,500	1-1/4	3-3/4	4-7/8	9/16	5/8	3/8	13/16	3/4
B-75	1/2	7,500	1-1/2	4	5-3/8	11/16	5/8	7/16	7/8	1-3/4
B-90	9/16	9,000	1-1/2	4	5-3/8	11/16	5/8	1/2	7/8	2
C-100	5/8	10,000	1-7/8	5-7/16	7-1/16	13/16	3/4	5/8	15/16	4
D-160	3/4	16,000	2-7/16	7-7/8	10-1/8	1-1/8	1	7/8	1-9/16	8
D-300	1	30,000	2-1/2	8-29/32	11-5/32	1-1/8	1	7/8	1-9/16	9

Note: All dimensions are in inches

*Dimensions, weights, capacities are approximate. Manufacturer's specifications subject to change without notice.

